



00600A2N1NA077

Adapter

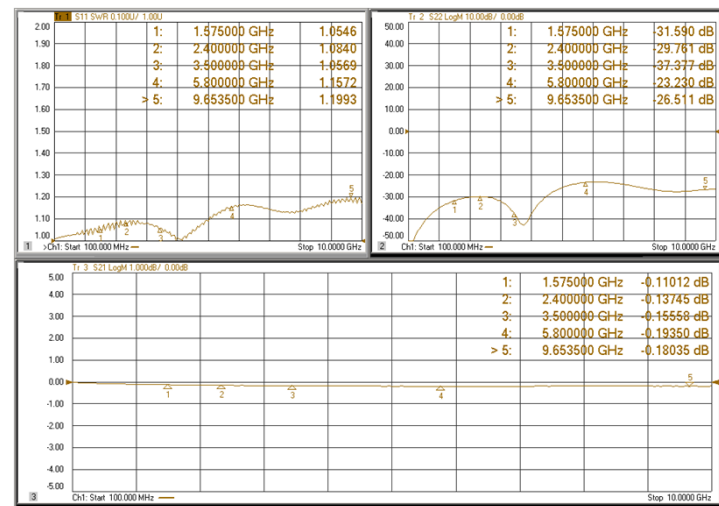
10GHz 50Ω 六角N(M)-SMA(F)
Adapter/Nickel

Features

- ✓ High Repeatability
- ✓ Low VSWR



Test Report



Electrical Specifications

Frequency	DC-10GHz
VSWR	1.3:1(Max.)
Impedance	50Ohm
Connection 1	N Male
Connection 2	SMA Female

Mechanical

Durability	500 Cycles
------------	------------

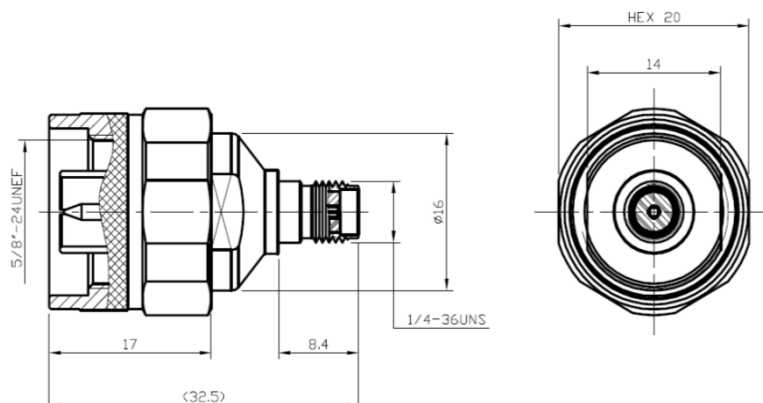
Environmental

Operating Temperature	-40℃~85℃
-----------------------	----------

Material

Part	Material	Plated
Body	Brass	Nickel
Center Pin	Phosphor Bronze	Gold
Insulator	Teflon	
Inner Retaining Ring	Brass	
Gasket	Silicone	Red

Outling Drawing (Unit:mm) Tolerance:±0.1mm



All Specification Changed Without Notification.