



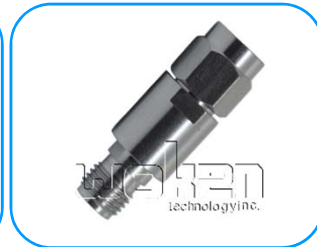
# 00800A1G01H-XX

## Attenuator

### 6GHz SMA 2W Fixed Attenuator

#### Features

- ✓ Small Size
- ✓ Low VSWR



#### Test Report

0.3dB:

#### Electrical Specifications

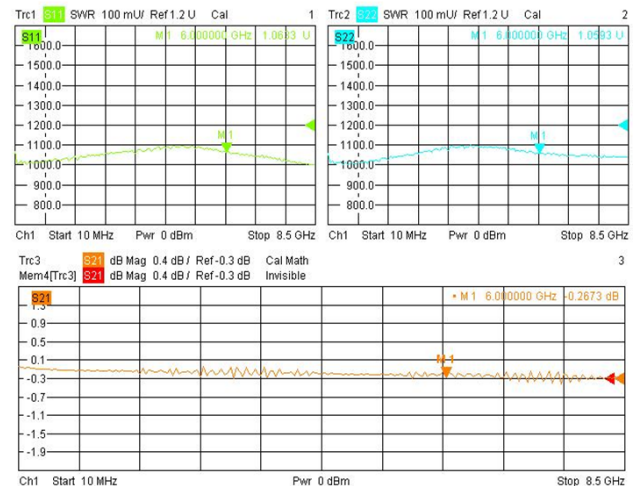
Frequency	DC-6GHz
Standard Values	0.1,0.2,0.3,0.4,0.5,0.6,0.7,0.8,0.9dB
Attenuation Accuracy	0.1 dB: + 0.2dB
	0.2dB : +0.2dB,-0.1dB
	0.3,0.4,0.5,0.6,0.7,0.8,0.9dB : $\pm 0.2$ dB
VSWR	1.2:1(Max.)
Average Power	2W@25°C
Impedance	50Ohm
Connection 1	SMA Male
Connection 2	SMA Female

#### Mechanical

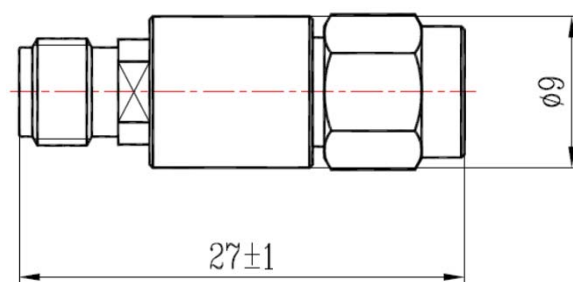
Durability	500 Cycles
------------	------------

#### Environmental

Operating Temperature	-55°C~125°C
-----------------------	-------------



#### Outling Drawing (Unit:mm)



All Specification Changed Without Notification.